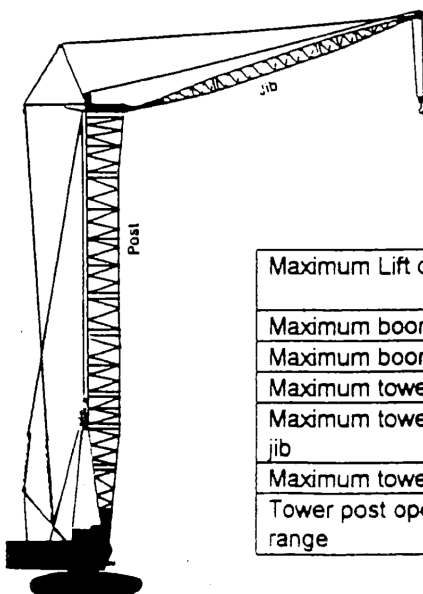
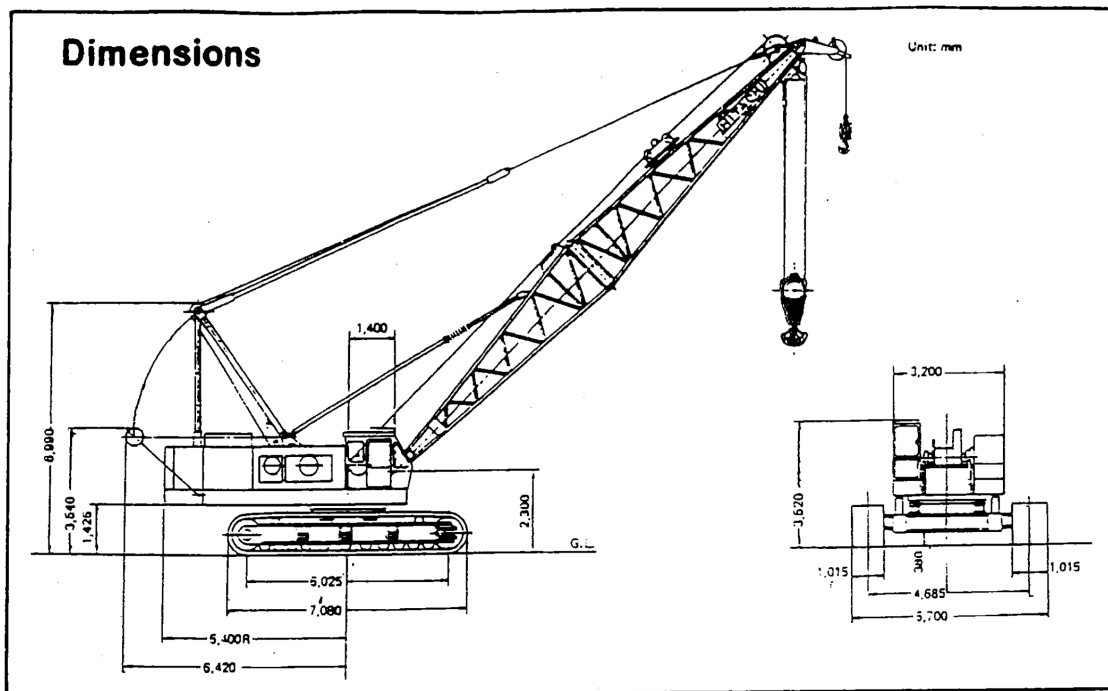


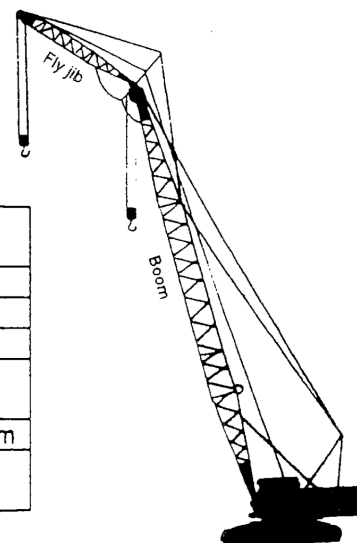
General Dimensions (with basic boom)

Unit: mm



Tower Crane

Maximum Lift capacity	100,000kg @ 5.3m
Maximum boom	70m
Maximum boom + jib	61m + 18m
Maximum tower post	46m+
Maximum tower luffing jib	40m
Maximum tower lift	20,000kg @ 13m
Tower post operating range	90° to 70°



Crane